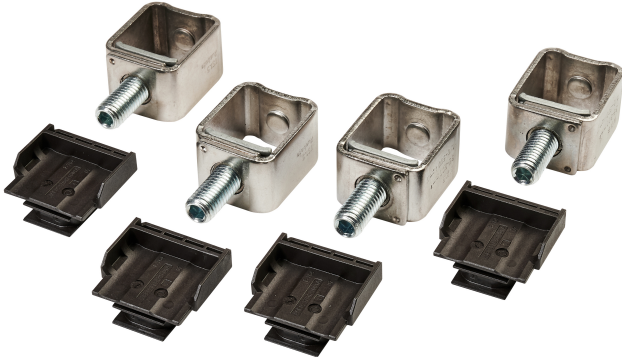


- For use with Powerstar VM160 Panel Boards
- Cable Capacity 35 - 300mm

**Product Specification Data**

Revision Date: 02/08/2022

Type of accessory/spare part	Connection terminal
Terminal Capacity L&N	300 mm <sup>2</sup>
CE Conformity	Yes
UKCA Conformity	Yes
Amperage	630 A
Pole Configuration	4P
Main switch rating	630 A

Although every effort has been made to ensure accuracy in the compilation of the technical detail within this datasheet, specifications and performance data are constantly changing. Latest details can be obtained from the Electrium website.