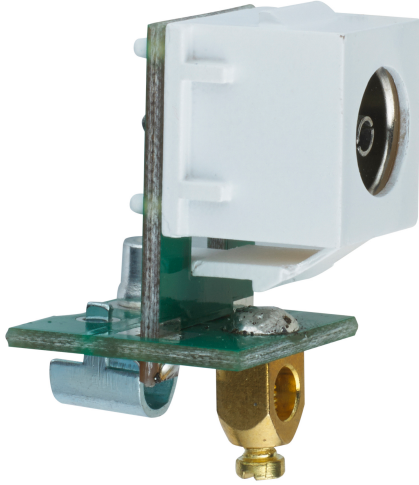


- Elegant Modular Solution
- Angled Push Fit Solution



Product Specification Data		Revision Date: 15/10/2021
Product Standard/s	BS 6312, BS EN 41003	
LRV Value	74	
CE Conformity	Yes	
WEEE Symbol	Yes	
UKCA Conformity	Yes	
Assembly arrangement	Modular device for domestic switching devices	
Utilization	Other	
With dust cover	No	
With hinged lid	No	
Outlet direction	Inclined	
With imprint	No	
Mounting method	Module frame	
Material	Plastic	
Material quality	Thermoplastic	
Halogen free	Yes	
Surface protection	Other	
Surface finishing	Glossy	
Colour	White	
Type of fastening	Engage (snap)	
Number of modules (module system)	1	
Suitable for number of connectors	1	
Shielded housing	Yes	
Width of device	17 mm	
Height of device	17 mm	
Depth of device	35 mm	
Min. depth of built-in installation box	35 mm	

Although every effort has been made to ensure accuracy in the compilation of the technical detail within this datasheet, specifications and performance data are constantly changing. Latest details can be obtained from the Electrium website.