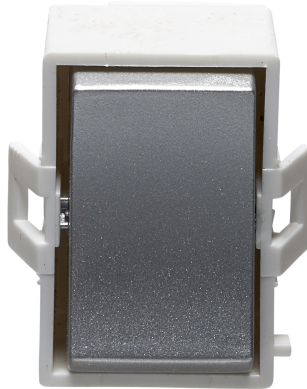


- Smooth and slimline profile
- Clip on front plate for clean screwless aesthetic
- Silver Finish



Product Specification Data		Revision Date: 15/10/2021
Product Standard/s	BS EN 60669-1	
Terminal Capacity L&N	3 x 2.5, 2 x 4.0, 1 x 6.0 mm <sup>2</sup>	
Frequency	50 Hz	
CE Conformity	Yes	
UKCA Conformity	Yes	
Wiring system	Two-way switch	
Method of operation	Rocker/button	
Assembly arrangement	Basic element	
Number of modules (module system)	1	
Push button switch	Yes	
Number of rockers	1	
Mounting method	Module frame	
Type of fastening	Screw mounting	
With mounting plate	No	
Material	Plastic	
Material quality	Thermoplastic	
Halogen free	Yes	
Surface protection	Other	
Surface finishing	Glossy	
Colour	Silver	
Illumination	No	
Function lighting	Other	
Type of lighting	Not included	
Suitable for degree of protection (IP)	IP2X	
Nominal voltage	250 V	
Rated current	20 A	
Switching current for fluorescent lamps	20 AX	
Connection type	Screwed terminal	
Min. depth of built-in installation box	25 mm	

Although every effort has been made to ensure accuracy in the compilation of the technical detail within this datasheet, specifications and performance data are constantly changing. Latest details can be obtained from the Electrium website.



**Electrium Sales Limited**, Walkmill Lane, Cannock WS11 0XE  
01543 455000 [www.electrium.co.uk](http://www.electrium.co.uk) [info@electrium.co.uk](mailto:info@electrium.co.uk)