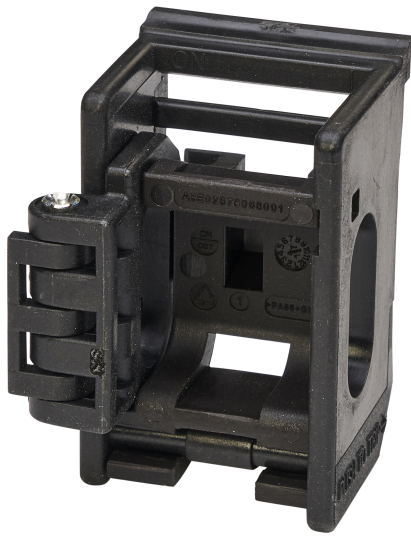




## List No. NHVMDLD

NH VM160

MCCB Dolly Locking Device



- Accessory for NH VM160 Panel Boards
- Fits directly to toggle switch of outgoing MCCBs
- Prevents operation of toggle switch with use of moulded plastic adapter to affix padlock
- Cover shield door can be closed and locked with this device fitted

### Product Specification Data

Revision Date: 15/10/2021

Type of accessory	Mechanical locking
CE Conformity	Yes
WEEE Symbol	No
UKCA Conformity	Yes

Although every effort has been made to ensure accuracy in the compilation of the technical detail within this datasheet, specifications and performance data are constantly changing. Latest details can be obtained from the Electrium website.