



**IMPORTANT INFORMATION**

*This unit should be installed by a qualified competent person in accordance with all relevant legislation and regulations including building regulations and wiring regulations BS7671. If in doubt contact a qualified competent person.*

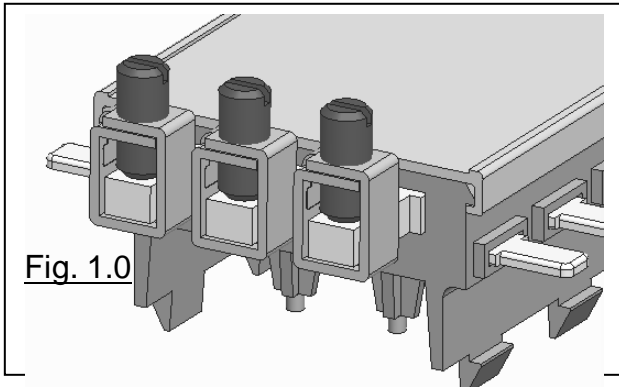
- Turn off all power supplying this equipment before working on or inside the equipment.
- Always use a properly rated volt-sensing device to confirm the power is off.
- Replace all devices, doors and covers before turning on the power to this equipment.
- To avoid ingress of swarf and similar material, always remove gland plates to allow cutting/slotting for cable entries.

**Failure to follow these instructions could result in serious injury or death.**

- Remove the gland plates from the bottom of the distribution board.
- Fit the unit below the MCB distribution board units using the M5 x 16 bolts supplied using the holes in the rear flange.
- Fit the cross strap supplied to the inside of the distribution board and bolt through both boxes and strap to secure the front of the units (see diagram b on reverse).
- Connect the incoming cables using the wiring diagram below and the instruction leaflet supplied with the distribution board.  
**Ensure connection phase rotation is correct.**
- Power supply cables. Connect the meter power supply cables into the balcony terminals on the **load** side of the incoming device (see diagram c on reverse). Tighten to torque specified with the device.
- Fully tighten terminal cages and cable clamps to torque as recommended in the distribution board instruction leaflet.
- Refer to meter instructions to set up meter. (Note meter CT ratio pre-set to 125/5A or 250/5A as appropriate)
- **NOTE! Parts of the installation in which the meter kit is to be installed may remain live even when isolated. When working on unit FULLY open all meter fuses.**

**Affix supplied fuse warning labels in a clearly visible area in the following places 1) beneath or next to meter fuses and 2) beneath or next to isolator on front shield.**

Before fitting the front cover, check the tightness of **all** connections, including factory made connections.



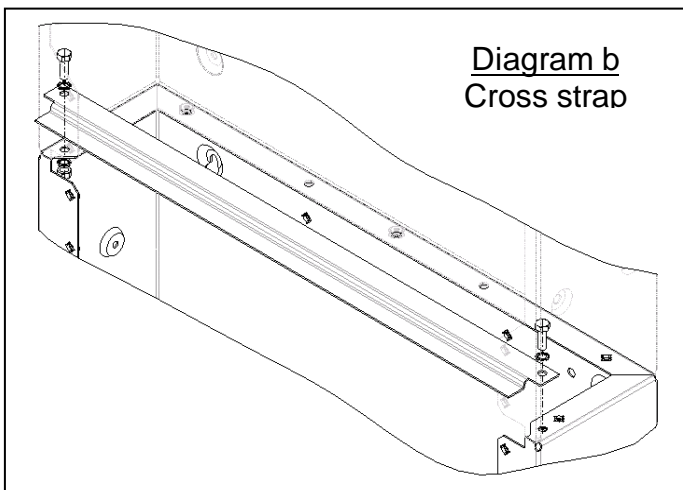
**Both STD and MID power wiring will be terminated at the top busbar using terminal cages provided**

- Using **18LKD70** cable kit terminal cages, from the top of the busbar, connect the Voltage loom to the bottom of protection fuses. See fig 1.0
- Fully tighten terminal cages and cable clamps to torque recommended in the distribution board instruction leaflet.
- Remove the appropriate knockout(s) in the cableway front plate and refit to box

- **NOTE! Parts of the installation in which the meter kit is to be installed may remain live even when isolated. When working on unit FULLY open all meter fuses.**

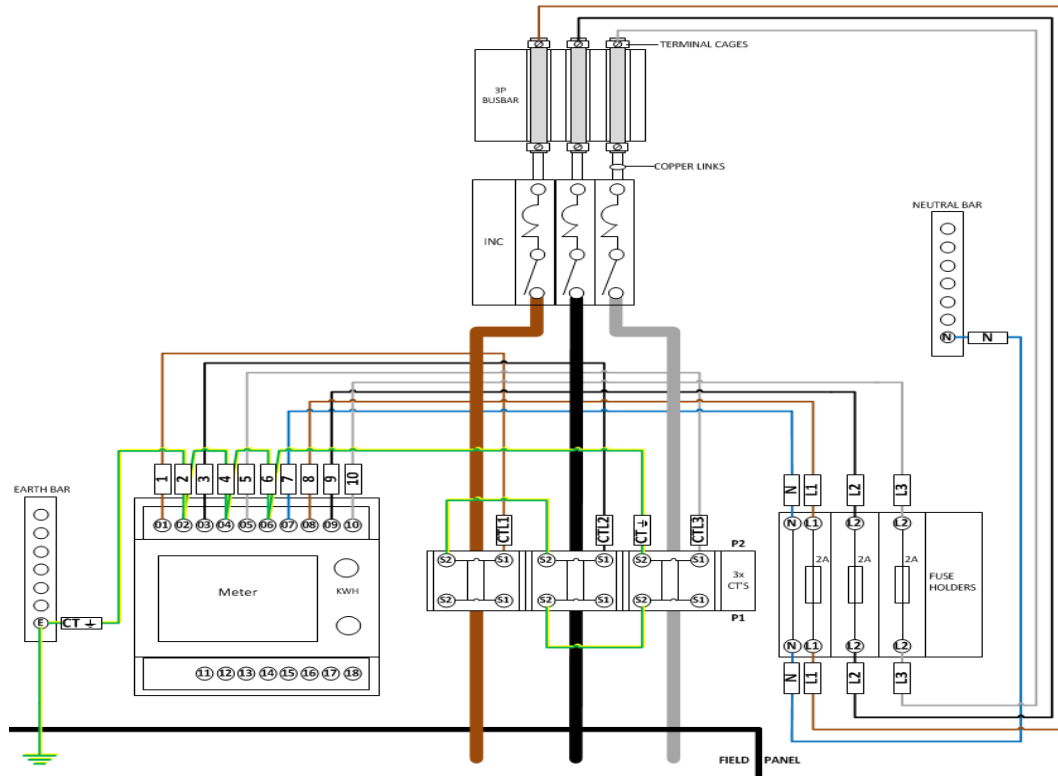
**Affix supplied fuse warning labels in a clearly visible area in the following places 1) beneath or next to meter fuses and 2) beneath or next to isolator on front shield.**

**DO NOT USE POWER TOOL SCREWDRIVERS ON ELECTRICAL CONNECTIONS**



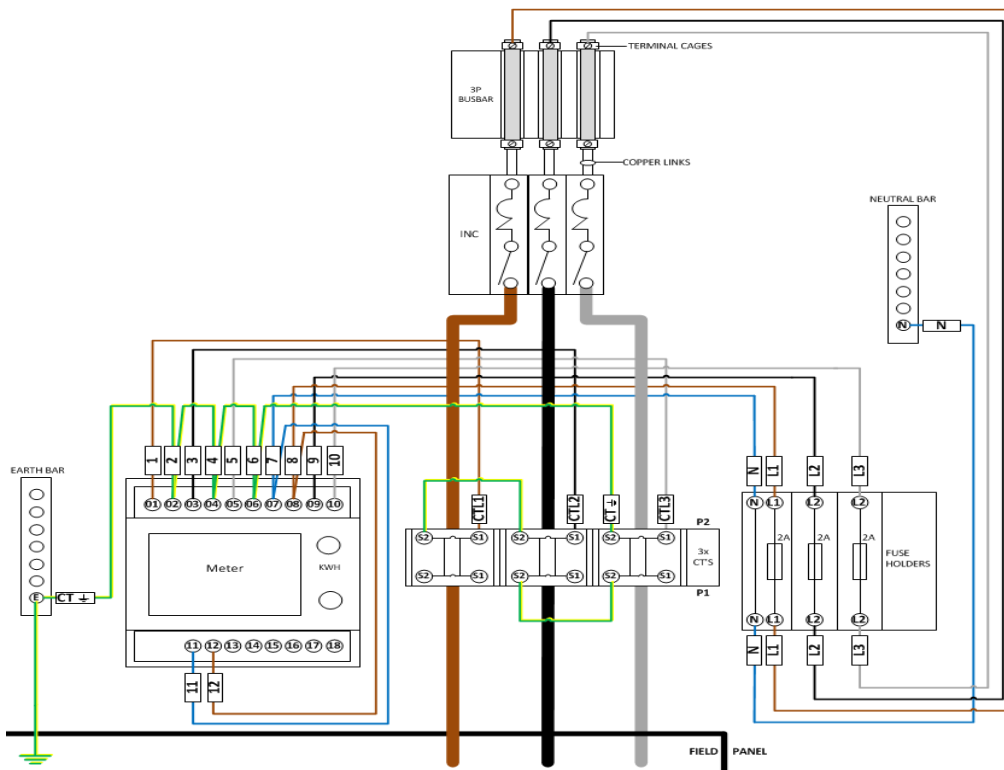


**Standard Meter Kit wiring**



**Fig. 3**

**MID Meter Kit wiring**



**Fig. 4**