



IMPORTANT INFORMATION

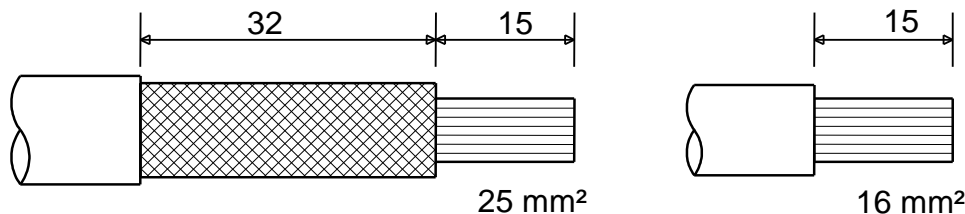
This unit should be installed by a qualified competent person in accordance with all relevant legislation and regulations including building regulations and wiring regulations BS7671. If in doubt contact a qualified competent person.

- Turn off all power supplying this equipment before working on or inside the equipment.
- Always use a properly rated volt-sensing device to confirm the power is off.
- Replace all devices, doors and covers before turning on the power to this equipment.
- To avoid ingress of swarf and similar material, always remove gland plates to allow cutting/slotting for cable entries.

Failure to follow these instructions could result in serious injury or death.

DO NOT USE POWER TOOL SCREWDRIVERS ON ELECTRICAL CONNECTIONS

1 CABLE STRIPPING DETAILS



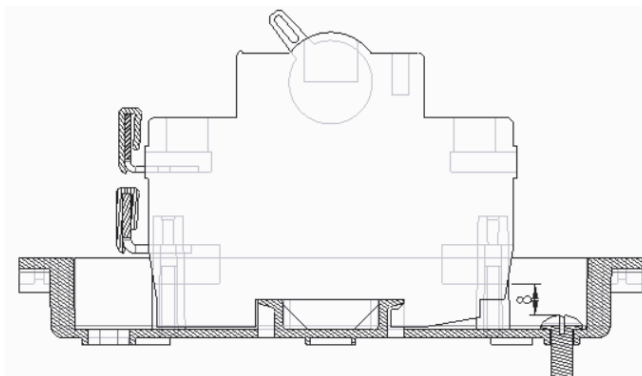
2 ENSURE THE TIGHTNESS OF ALL SCREW CONNECTIONS

Device	Max cable Capacity	Recommended tightening torque
Main Switch	50 mm ²	2.3 Nm
SPD	1.5 mm ² to 16 mm ²	3.0 Nm
	25 mm ² to 35 mm ²	4.5 Nm

Use No. 2 Pozidrive bit DO NOT connect using power driven screwdrivers

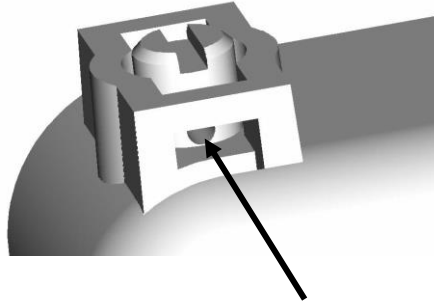
3 FIXING SCREW – TERMINAL CAGE CLEARANCE

When installing this unit ensure there is a minimum 8 mm clearance between the head of the screw fixing the unit in its mounting position and the terminal cage. (see fig below)



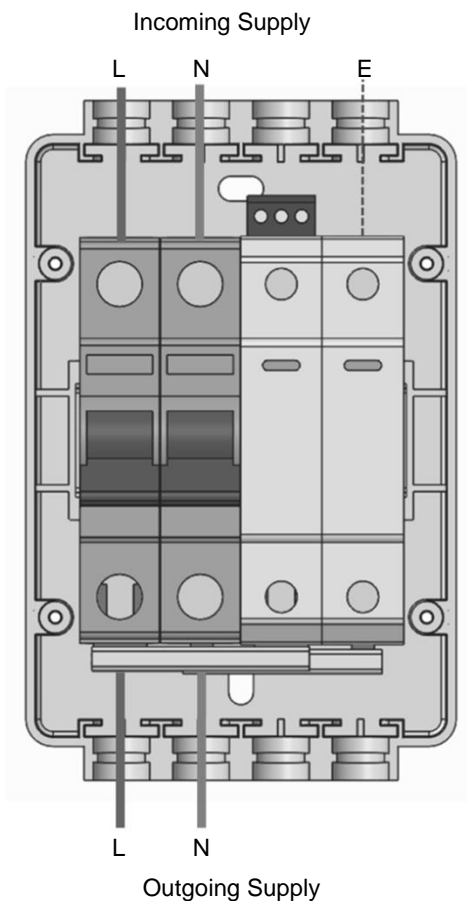


4 TO PREVENT REMOVAL OF FRONT COVER



Insert wire or plastic seal through tamper-proof screw.

5 CIRCUIT DIAGRAM



Important Note:
Incoming cables must only be fitted into the top of the Switch as shown.

