



**DANGER: LIVE PARTS ENCLOSED.** Ensure the unit is installed by a qualified competent person in accordance with all relevant legislation and regulations including building regulations and wiring regulations BS7671. If in doubt contact a qualified competent person.



**IMPORTANT INFORMATION**

Follow the instructions below before working on or inside the equipment.



- Turn off all power supplies
- Always use a calibrated volt-sensing device to confirm the power is off.
- Replace all devices, doors and covers before turning on the power to this equipment.
- To avoid ingress of swarf and similar material, always remove gland plates to allow cutting/slotting for cable entries.
- Do not use power screwdrivers on electrical connections.



**Failure to follow these instructions could result in serious injury or death.**

**DO NOT USE POWER TOOL SCREWDRIVERS ON ELECTRICAL CONNECTIONS**

**Fitting Instruction**

Remove the door and front plate from the main panel board. Loosen the M6 Hex Bolts (Item No. 4 in the table below) for the easier fitment. Fit the assembly kit to the incomer mounting plate and the main busbar by referring to Fig. 1a.

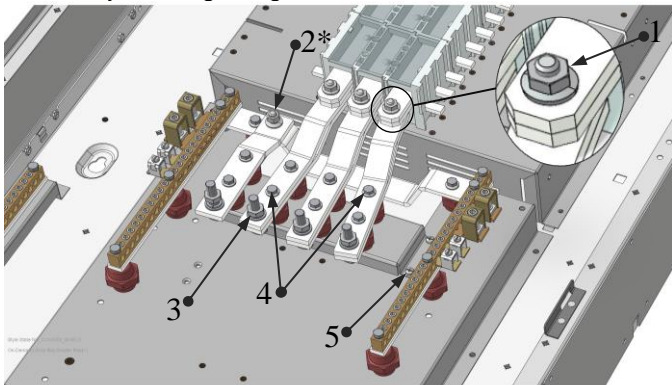


Fig. 1a

No.	Description		Torque Setting
	400 A	630A	
1	M8 x 35 mm Hex Bolt, Washer and Nut	M8 x 50 mm Hex Bolt, Washer and Nut	25 Nm
2*	M8 x 30 mm Coach Bolt, Washer and Nut		25 Nm
3	M10 x 40 mm Hex Bolt, Washer and Nut	M10 x 50 mm Hex Bolt, Washer and Nut	40 Nm
4	M6 x 20 mm Hex Bolt and Washer	M6 x 30 mm Hex Bolt and Washer	10 Nm
5	M5 x 9.5 mm Pozzi Screw		N/A

\*Supplied with the Panel Board

After the assembly kit has been fitted, ensure the maximum distance between the outer phases (on the busbar end, refer to Fig. 1b.) of the assembly before all fastening to the correct torque. These connections will **NOT** be torqued in the factory. Refer to torque setting in Fig. 1a for recommended tightening torques. The incoming connection torque setting should be 40 Nm.

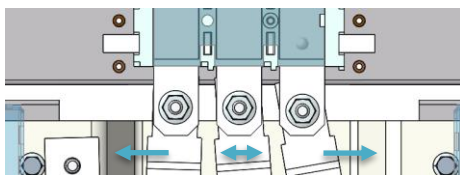


Fig. 1b

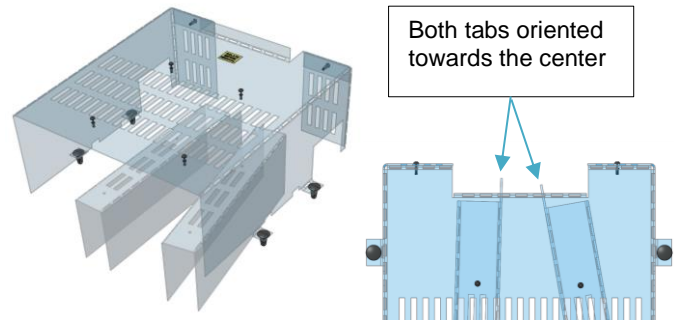


Fig. 2a

Assemble and install the shroud using 4 plastic push rivets provided. Refer to Fig. 2a and Fig. 2b for details.

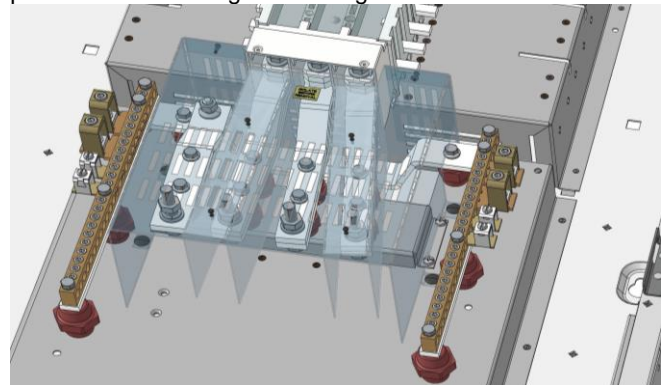


Fig. 2b

Fix the actuator blanking plates to the incomer front plate by referring to Fig. 3.

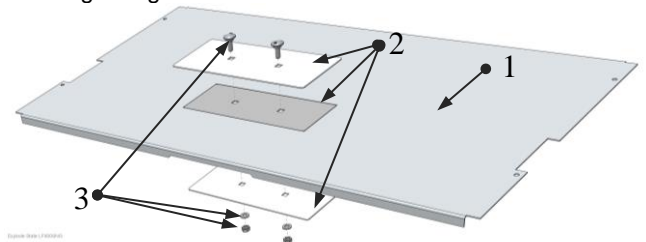


Fig. 3

No.	Description
1	Incomer Front Plate
2	Actuator Blanking Plates
3	M16 x 15 mm Coach Bolt, Washer and Nut

Before fitting the front cover & door to the main Panel board, check the tightness of **all** connections, including factory fitted connections.