



**DANGER: LIVE PARTS ENCLOSED.** Ensure the unit is installed by a qualified competent person in accordance with all relevant legislation and regulations including building regulations and wiring regulations BS 7671. If in doubt, contact a qualified competent person.



#### IMPORTANT INFORMATION

Follow the instructions below before working on or inside the equipment.



- Turn off all power supplies
- Always use a calibrated volt-sensing device to confirm the power is off.
- Replace all devices, doors and covers before turning on the power to this equipment.
- To avoid ingress of swarf and similar material, always remove gland plates to allow cutting/slotting for cable entries.
- Do not use power screwdrivers on electrical connections.



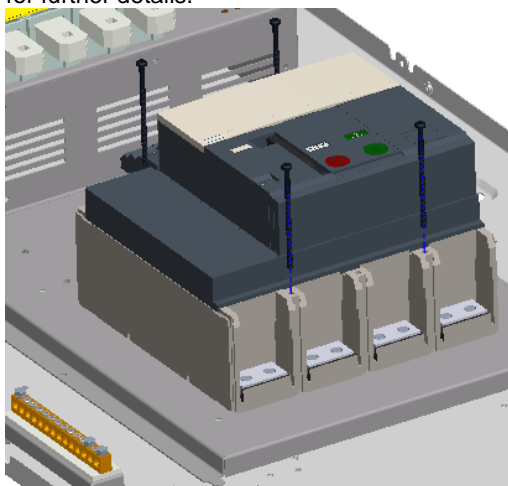
**Failure to follow these instructions could result in serious injury or death.**

#### DO NOT USE POWER TOOL SCREWDRIVERS ON ELECTRICAL CONNECTIONS

#### Fitting Instruction

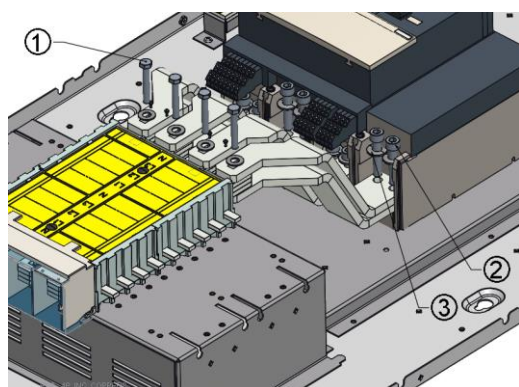
Remove the door and front plate from the main panel board.

Install the incoming device to the incoming mounting plate using the screws provided with the device, refer to instruction below (Fig. 1) for further details.



**Fig. 1**

Install the copper links, refer to instructions below (Fig. 2) for details.



**Fig. 2**

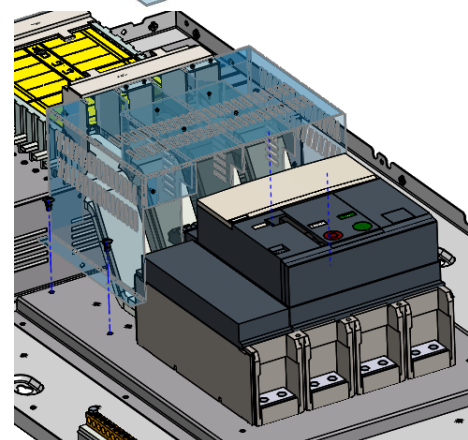
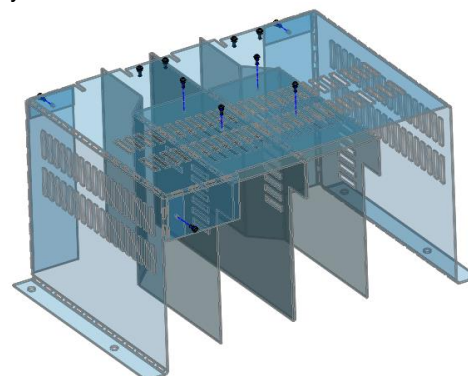
**Note!**  
The Incomer comes with M10x40 mm cap head bolts and use the M10 disc washers from this kit.

After the assembly kit has been fitted, ensure that all the fasteners have been fastened to the correct torque. These connections will **NOT** be torqued in the factory.

Refer to torque setting in Fig. 2 for recommended tightening torques. The incoming connection torque setting should be 40 Nm. For more details refer to the manufacturer's installation instructions provided with the incoming device.

#### Shroud fitting Instruction

Fit the new shroud to the top of the busbars/over the copper connections using snap rivets. Refer to Fig. 3 for shroud and interphase barrier assembly details. Remove any protective film from the polycarbonate shrouds and barriers.



**Fig. 3**

No.	Description	Torque Setting
1	M8 x 50 mm Hex Bolt	25 Nm
2	M10 x 40 mm Cap head Bolt supplied with 3VA27	40 Nm
3	M10 Disc washer	N/A

Before fitting the front cover & door to the main panel board, check the tightness of **all** connections, including factory made connections.