



DANGER: LIVE PARTS ENCLOSED. Ensure the unit is installed by a qualified competent person in accordance with all relevant legislation and regulations including building regulations and wiring regulations BS 7671. If in doubt, contact a qualified competent person.



IMPORTANT INFORMATION

Follow the instructions below before working on or inside the equipment.



- Turn off all power supplies
- Always use a calibrated volt-sensing device to confirm the power is off.
- Replace all devices, doors and covers before turning on the power to this equipment.
- To avoid ingress of swarf and similar material, always remove gland plates to allow cutting/slotting for cable entries.
- Do not use power screwdrivers on electrical connections.



Failure to follow these instructions could result in serious injury or death.

Fitting Instructions

Before assembling the Add-On enclosure to the main panel, remove the door, front shield & the gland plate from the main panelboard & Add-On unit. To remove the door, refer to Fig. 1.

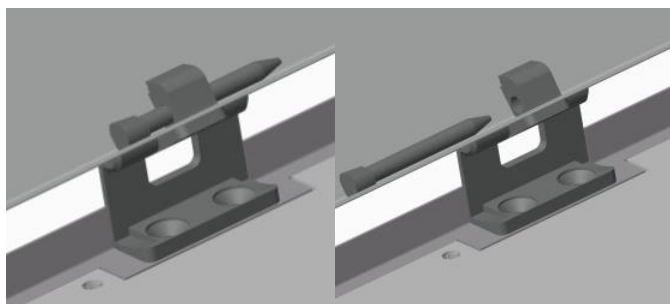


Fig. 1

Attach the Add-On unit to the panelboard using M6 Nuts, bolts and contact washers supplied (19 places), refer to Fig. 2 for details.

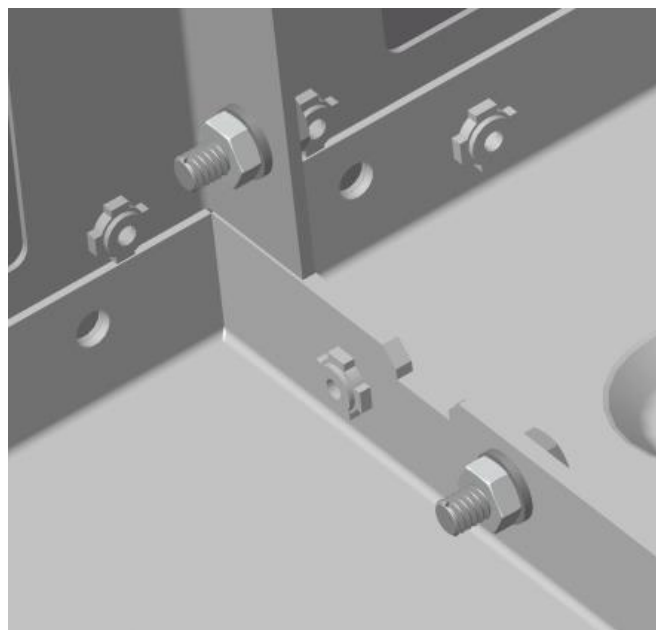


Fig. 2

Remove the shield, door, and gland plate. Then start to fit the Add-On enclosure to the panelboard by referring to Fig. 3.

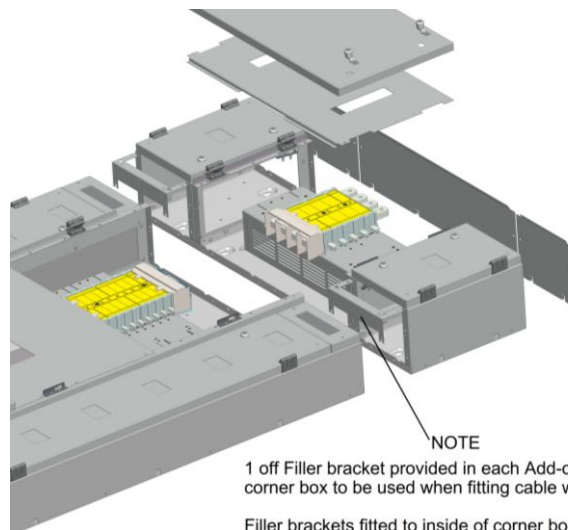


Fig. 3

After the Add-On unit has been attached to the main panelboard, fit the busbar connections (sold separately see Table 1 for required kit list number) as shown in Fig. 4. M8 coach-bolts are to be fitted using the M8 fasteners provided.

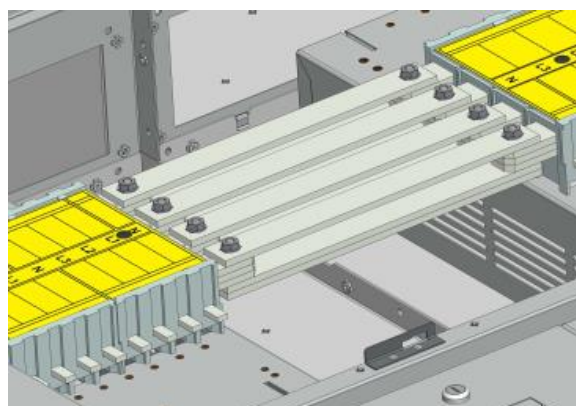


Fig. 4



**Table 1 – Panelboard Add on 250 A
Copper Extension List Numbers**

Connection kits	
250 A Add on link kit 4W	8GP1921-1DA01
250 A Add on link kit 8W	8GP1921-1DA02
250 A Add on link kit 12W	8GP1921-1DA03

Assemble busbar connection cover and interphase barriers as shown in Fig.5. Polycarbonate parts will need to be hand bent into shape. Remove any protective film from the polycarbonate shroud parts. Snap fit rivets are to be used to connect all parts together (14 places).

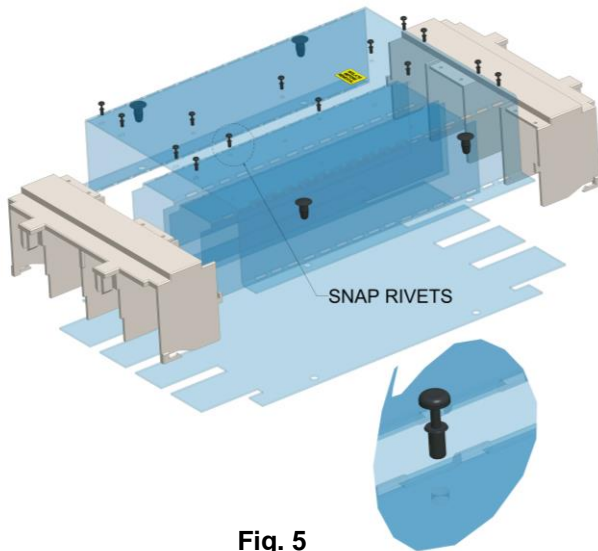


Fig. 5

Once the busbar covers are assembled, they can be fitted in one piece as shown in Fig. 6 and snap fitted with larger push fit rivets to bottom polycarbonate flat cover.

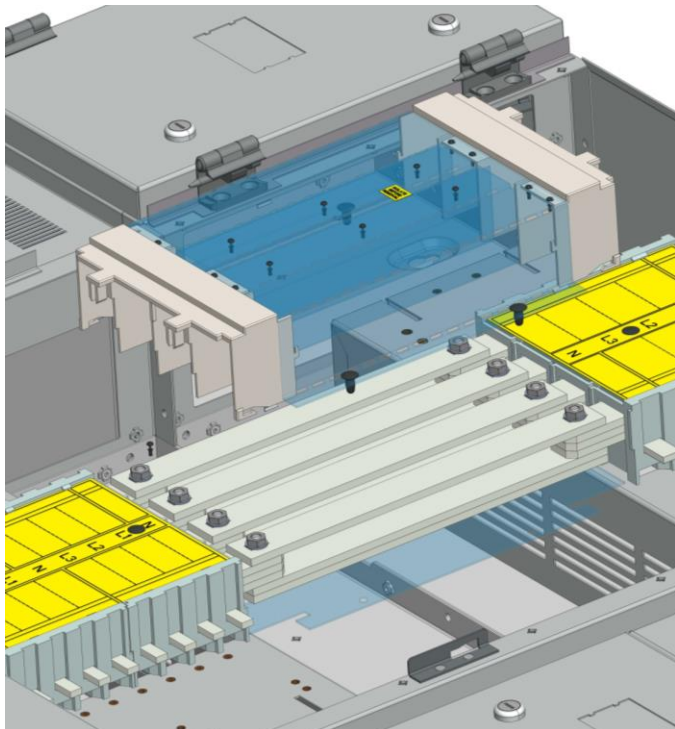


Fig. 6

After the Add-On unit has been attached and busbar links and shrouds have all been fitted, all covers, gland plates and doors need to be refitted. The gland plates originally fitted to the panelboard are to be re-used on the Add-On unit, refer to Fig.7 for details.

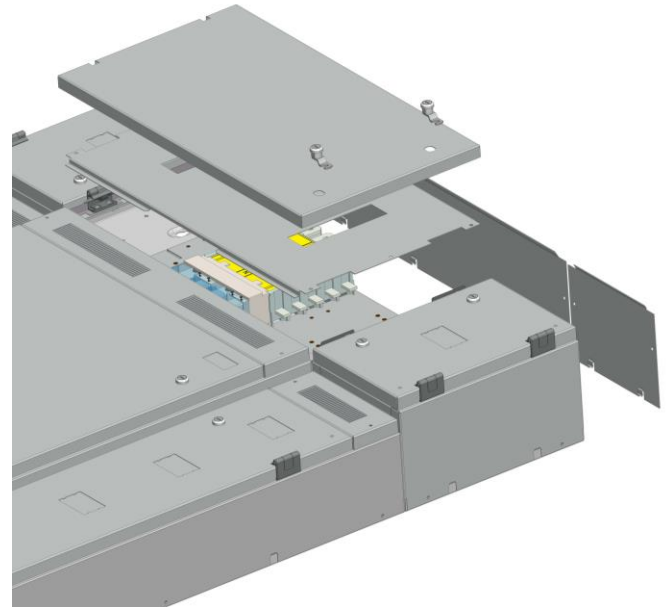


Fig. 7

Ensure that all nuts & bolts are tightened to the recommended torque as shown in the table below

Connection Type	Recommended Torque
M8 Nuts	20 Nm
M6 Bolt	13 Nm

SIEMENS

Siemens Electrical Products (EP), Sharston Road, Wythenshawe, Manchester, M22 4RA
E-Mail: sales.gbi.industry@siemens.com estimating.uk@siemens.com Tel: 08458 507600



Waste electrical products should not be disposed of with household waste.
Please recycle where waste disposal facilities exist.
Check with your retailer, wholesaler or local authority for recycling advice.

