



# INSTALLATION INSTRUCTIONS

# DSF RANGE

## Domestic Switch-Disconnecter Fuse IEC60947-3

Insulated	Metalclad	
DSF60	DSF60M	With 60A fuse fitted
DSF80	DSF80M	With 80A fuse fitted
DSF100	DSF100M	With 100A fuse fitted
DSFNF	DSFNFM	Unfused variants

### Safety Notes

This unit should be installed by a qualified competent person in accordance with all relevant legislation and regulations including building regulations and wiring regulations BS7671. If in doubt contact a qualified competent person.

This unit **MUST** be installed with incoming connections to the bottom terminals and outgoing connections to the top terminals.

The switch **MUST** be in the OFF position before attempting to open the fuse carrier.

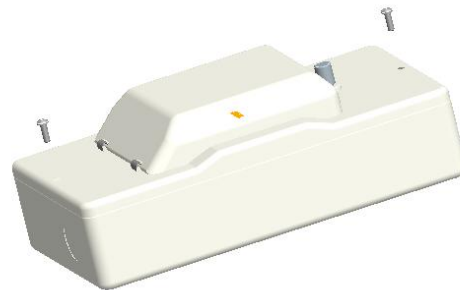
**Failure to observe the above could result in serious injury or even death.**

### Mounting metal cased units

Ensure that the switch is in the off position. Remove lid by removing 2 fixing screws as shown in Fig. 1. Remove knockouts as required.

Secure the unit in position on a flat, clean, dry surface using all of the fixing locations provided in the unit.

Fig 1



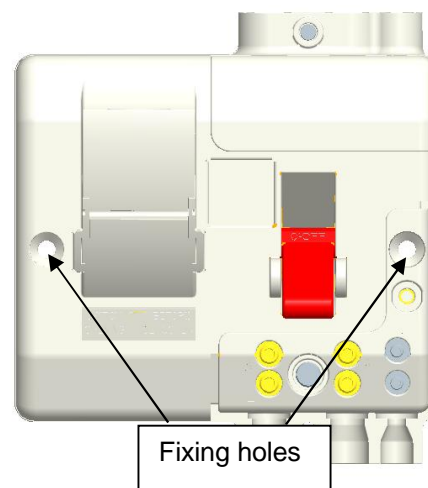
### Mounting insulated units

Ensure that the switch is in the off position, remove the incoming terminal cover and the fixing hole plug, fixing positions are located on the right hand side of the switch and the left hand side of the fuse. See Fig. 2.

Secure the unit in position on a flat, clean, dry surface using all of the fixing locations provided in the unit.

Remove the outgoing terminal shield.

Fig 2



The switch-disconnector fuse units incorporate Line, Neutral and Earth connections on the insulated body of the device. NB. Metal cased units must be earthed to the earth terminal in the base of the metal enclosure.

Supply & Load connections MUST be in accordance with these instructions and the markings upon the switch-fuse unit.

Connect the load cables to the top of the switch-disconnector fuse unit, following the L, N &  $\oplus$  markings.

Connect the supply cables to the bottom of the switch-disconnector fuse unit following the L, N &  $\oplus$  markings.

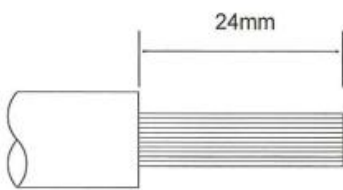
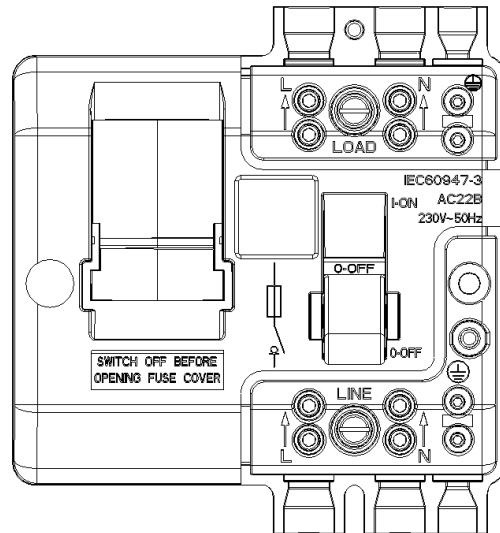


Fig 3.



Before fitting the front cover on metal cased units or replacing terminal shields on insulated units, check the tightness of all connections, including factory fitted connections.

**Note: Terminal shields are only fitted on insulated units, not metal cased.**

<b>Recommended tightening torques</b>		
<b>Live &amp; Neutral terminal Cage</b>	<b>Earth Terminal cage</b>	<b>Earth terminal bar. (metal clad only)</b>
2.3Nm. 16mm <sup>2</sup> min 35mm <sup>2</sup> max	0.7Nm. 10mm <sup>2</sup> min 16mm <sup>2</sup> max	1.2Nm. 10mm <sup>2</sup> min 16mm <sup>2</sup> max

Testing of the installation

After completion of the installation, it is essential that it is tested in accordance with the latest edition of the IET Wiring Regulations for Electrical Installations (BS7671).

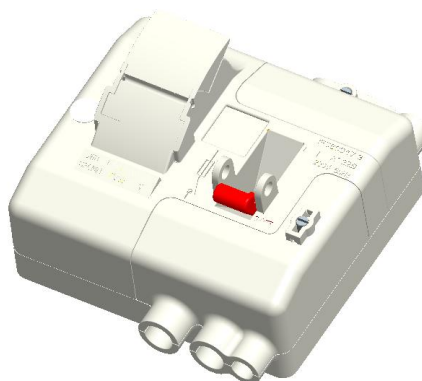
It is important to verify that the earth loop impedance requirements are satisfactory for the fuse size fitted. These units are designed to take IEC60269-3 System c cylindrical fuses of type II a dimensions (22.2mm diameter x58mm max length) of up to 100A rating. These dimensions are identical to BS1361 Type II a dimensions.

Ensure the fuse carrier is fully closed.

When the fuse carrier is fully closed the isolator can function.

**Note: Terminal shields are only fitted on insulated units, not metal cased.**

Fig 4.



Electrium Sales Limited, Walkmill Lane, Cannock, WS11 0XE, England

Tel: 01543 455000

Fax: 01543 455001



Waste electrical products should not be disposed of with household waste. Please recycle where waste disposal facilities exist. Check with your retailer, wholesaler or local authority for recycling advice.

