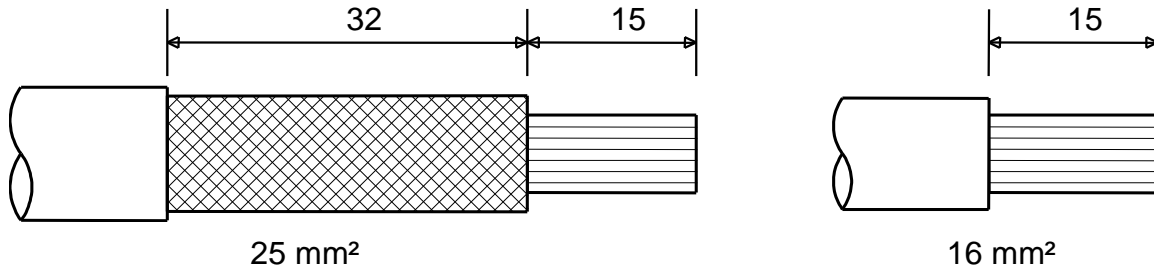


# INSTALLATION INSTRUCTIONS

THIS IS A CLASS 1 ENCLOSURE

## 1 CABLE STRIPPING DETAILS



## 2 ENSURE THE TIGHTNESS OF ALL SCREW CONNECTIONS

Use No.2 Pozzi-drive bit

Recommended tightening torque	Main switch	Max cable Capacity 50 mm <sup>2</sup>	2.3 Nm / (20 lbf-in)
-------------------------------	-------------	---------------------------------------	----------------------

DO NOT connect using power driven screwdrivers

## 3 TO ACCOMMODATE MORE MODULES IN ENCLOSURE

Increase the size of the front aperture by cutting along the grooves on the inside of the large cover.

## 4 BLANK OFF UNUSED CABLE ENTRY HOLES

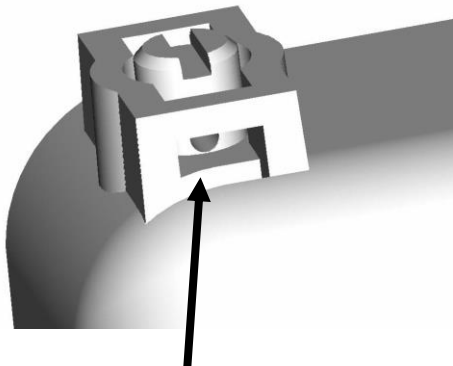
Insert the black plastic blanking pieces into the slots provided in the base of the enclosure.

## 5. FIXING SCREW – TERMINAL CAGE CLEARANCE

When installing this unit ensure there is a minimum 8mm clearance between the head of the screw fixing the unit in its mounting position and the terminal cage.

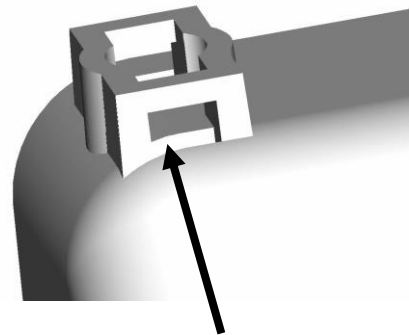
## 6 TO PREVENT REMOVAL OF FRONT COVER - either:

a)



Insert wire or plastic seal through tamper-proof screw.

b)



Insert flat plastic seal into cover above head of standard screw.