



This kit should be installed by a qualified competent person in accordance with all relevant legislation and regulations including building regulations and wiring regulations BS7671. If in doubt contact a qualified competent person.

- Turn off all power supplying this equipment before working on or inside the equipment.
- Always use a properly rated volt-sensing device to confirm the power is off.
- Replace all devices, doors and covers before turning on the power to this equipment.
- To avoid ingress of swarf and similar material, always remove gland plates to allow cutting/slotting for cable entries.

Failure to follow these instructions could result in serious injury or death.

DO NOT USE POWER TOOL SCREWDRIVERS ON ELECTRICAL CONNECTION

Fitting Instructions

- Before assembling the Add-On unit to the main panel, remove the door, front shield & the gland plate from the main panelboard and the Add-On unit
- To remove the door, refer to Fig. 1.

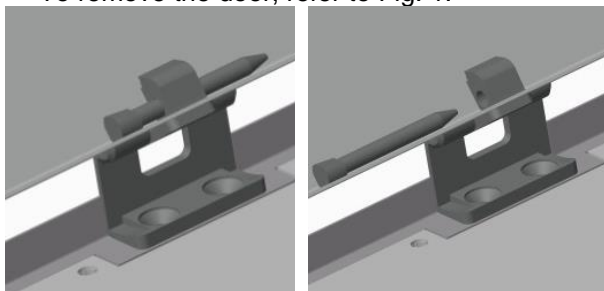


Fig. 1

- Attach the Add-On unit to the panelboard using M6 Nuts, bolts and contact washers supplied (19 Fixing locations). Refer to Fig. 2a and Fig. 2b.

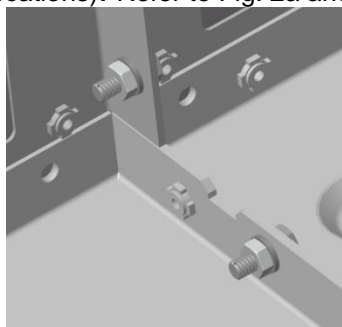


Fig. 2a

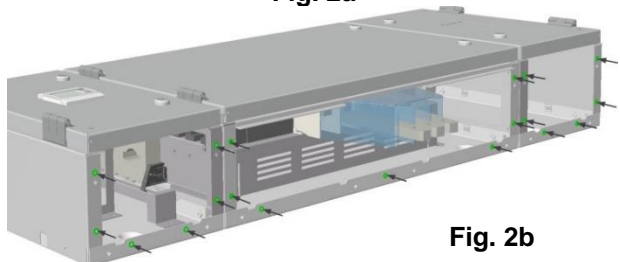


Fig. 2b

Once the shield, door and gland plates have been removed, start to assemble the add-on enclosure to the panelboard. Refer to Fig. 3.

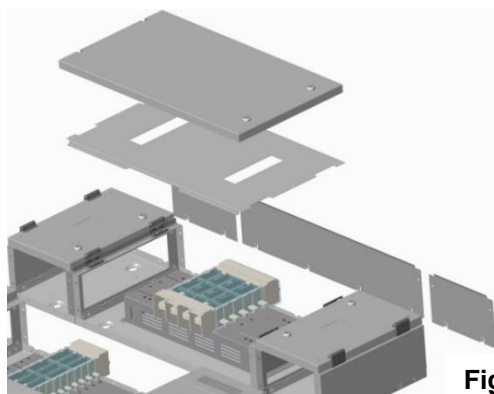


Fig. 3

- When the Add-On unit has been attached to the main panelboard, fit the busbar connections as shown in Fig. 4. M8 coachbolts are to be fitted from underneath and fastened with M8 nuts & disc washers



Fig. 4

- Refer to Table 1 for torque settings.

Connection Type	Recommended Torque
M8 Nuts	20 Nm
M6 Nuts & Bolts	10 Nm

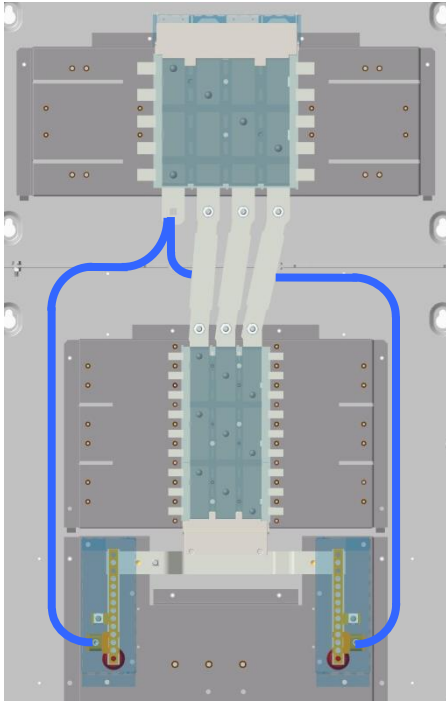
Table 1

- Fit 2 x 70 mm² Neutral cables with lugs from the Add-On unit Neutral busbar to the main Neutral





terminal bar. Cables will need to be cut to length and have ferrules fitted. See diagram on Fig 5.



- Assemble busbar connection cover and interphase barriers as shown. Polycarbonate

Fig. 5

- Once the busbar covers are assembled they can be fitted in one piece as shown in Fig. 6

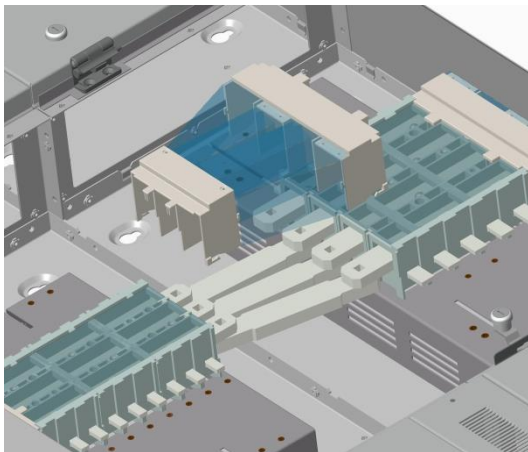


Fig. 6

Ensure that all nuts & bolts are tightened to the recommended torque as shown in Table 1

parts will need to be hand bent into shape. Snap fit rivets are to be used to connect all parts together (10 places).

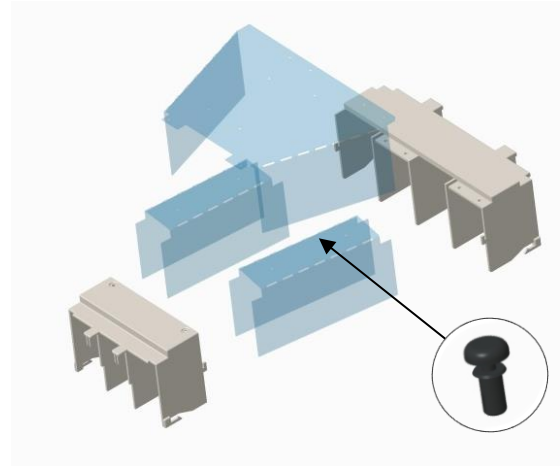


Fig. 7

- After the Add-On unit has been attached and busbars, shields etc have all been fitted, all covers, gland plates and doors need to be refitted. The gland plates originally fitted to the panelboard are to be re-used on the Add-On unit

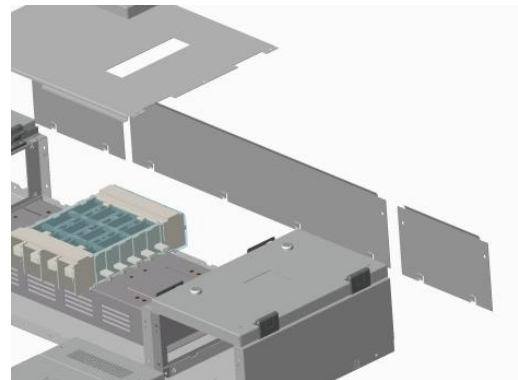


Fig. 8



DE-RATING OF THE OUTGOING DEVICES

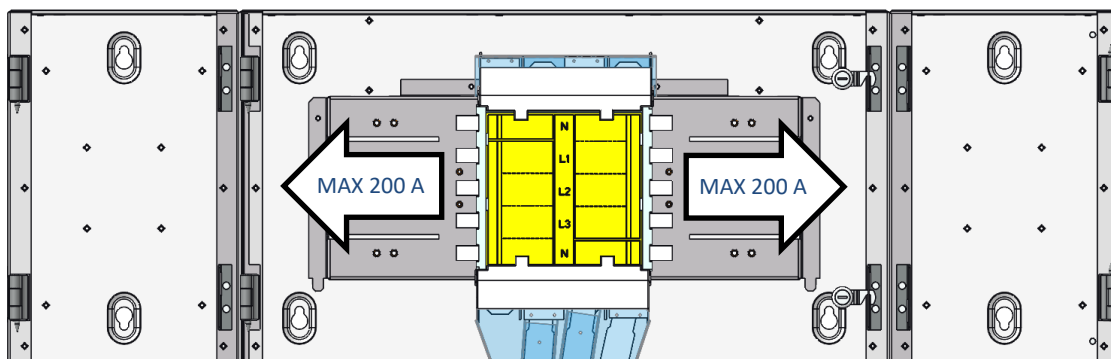
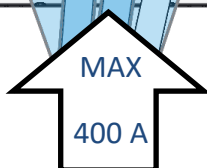


Fig. 9



The maximum rating of the outgoing device in the NHVM3P2502 Add-on box is 200 when used in combination with the 630 A panel boards.

Panelboard	Panelboard rating	NHVM3P2502 Outgoing device rating	
NHVM36306	630 A	LHS - 200 A	RHS - 200 A
NHVM36312	630 A	LHS - 200 A	RHS - 200 A
NHVM36318	630 A	LHS - 200 A	RHS - 200 A

Table 2