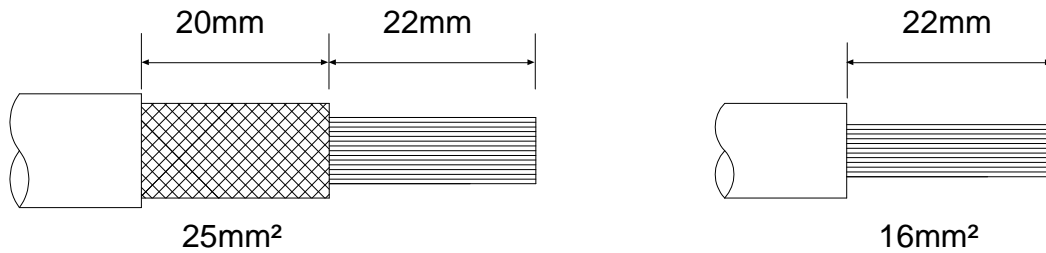


# WS102TT, WS103TT, WS104TT

**1 CABLE STRIPPING DETAILS (Double Terminal Type Isolator)**



**2 ENSURE THE TIGHTNESS OF ALL SCREW CONNECTIONS**

Use No.2 Pozi-drive bit

Recommended tightening torque	Main switch	Max cable Capacity 50mm <sup>2</sup>	2.3Nm / (20 lbf-in)
-------------------------------	-------------	--------------------------------------	---------------------

DO NOT connect using power driven screwdrivers

**3 TO ACCOMMODATE MORE MODULES IN ENCLOSURE (Max 4)**

Increase the size of the front aperture by cutting along the grooves on the inside of the large cover.

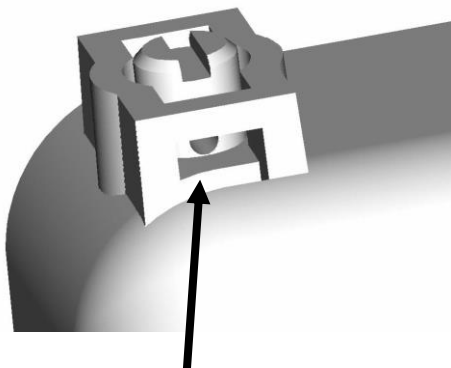
**4 BLANK OFF UNUSED CABLE ENTRY HOLES**

Insert the black plastic blanking pieces into the slots provided in the base of the enclosure.

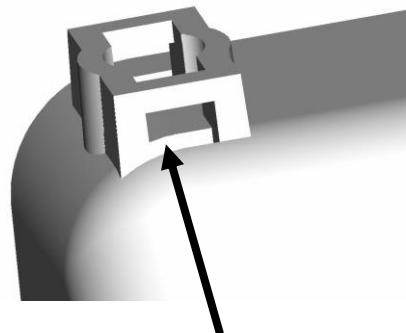
**5 TO PREVENT REMOVAL OF FRONT COVER - either:**

a)

b)



Insert wire or plastic seal through tamper-proof screw.

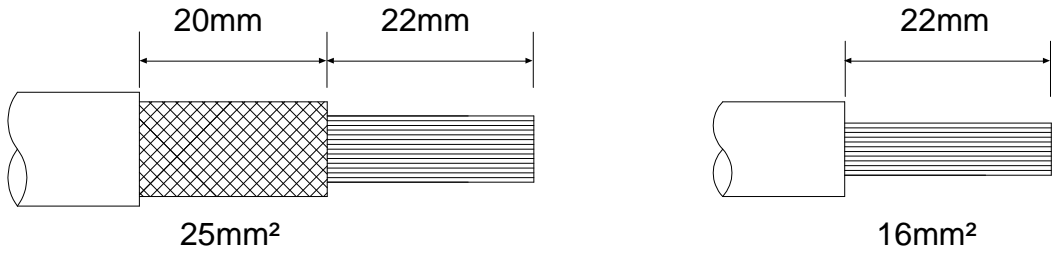


Insert flat plastic seal into cover above head of standard screw.



# WS102TT, WS103TT, WS104TT

**1 CABLE STRIPPING DETAILS (Double Terminal Type Isolator)**



**2 ENSURE THE TIGHTNESS OF ALL SCREW CONNECTIONS**

Use No.2 Pozi-drive bit

Recommended tightening torque	Main switch	Max cable Capacity 50mm <sup>2</sup>	2.3Nm / (20 lbf-in)
-------------------------------	-------------	--------------------------------------	---------------------

DO NOT connect using power driven screwdrivers

**3 TO ACCOMMODATE MORE MODULES IN ENCLOSURE (Max 4)**

Increase the size of the front aperture by cutting along the grooves on the inside of the large cover.

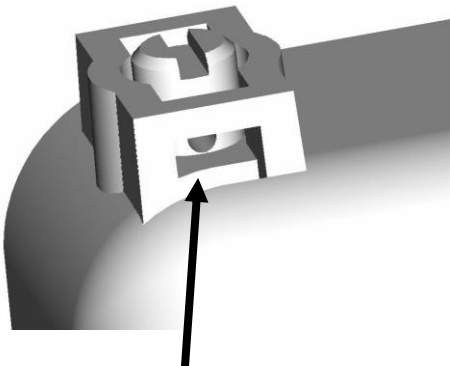
**4 BLANK OFF UNUSED CABLE ENTRY HOLES**

Insert the black plastic blanking pieces into the slots provided in the base of the enclosure.

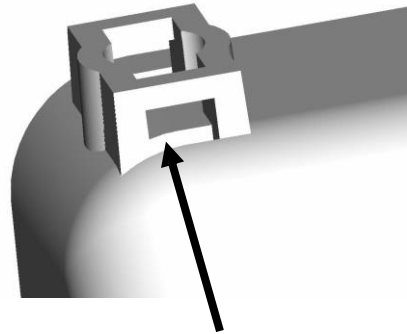
**5 TO PREVENT REMOVAL OF FRONT COVER - either:**

a)

b)



Insert wire or plastic seal through tamper-proof screw.



Insert flat plastic seal into cover above head of standard screw.