



RCBO

Type: ELE

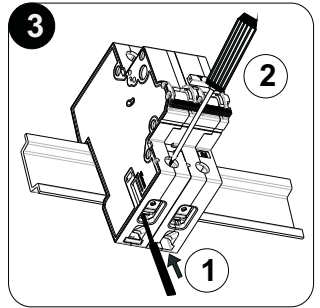
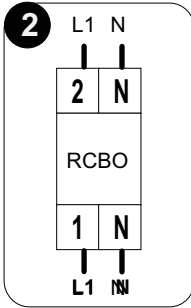
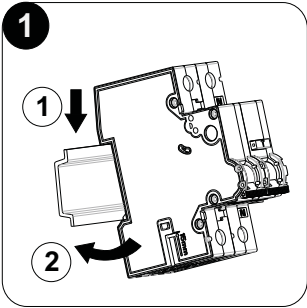
Assembly instructions

 Type A


IEC 61009-1

Installation advice

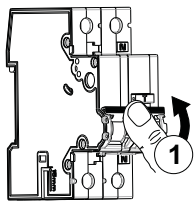
GB Installation, connection, and commissioning shall only be carried out by qualified competent person.

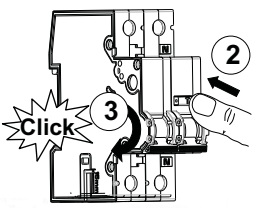


4

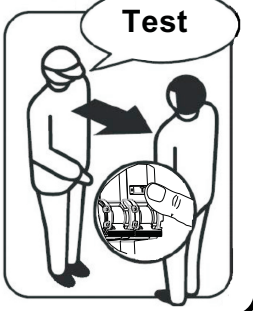


Test





**Test in line with BS7671
IEE Wiring Regulations.**



Electrium Sales Limited

Walkmill Lane, Cannock, WS11 OXE, England.

Tel: 01543 455000

Fax: 01543 455001